

# Template for Evidence(s)

## UI GreenMetric Questionnaire

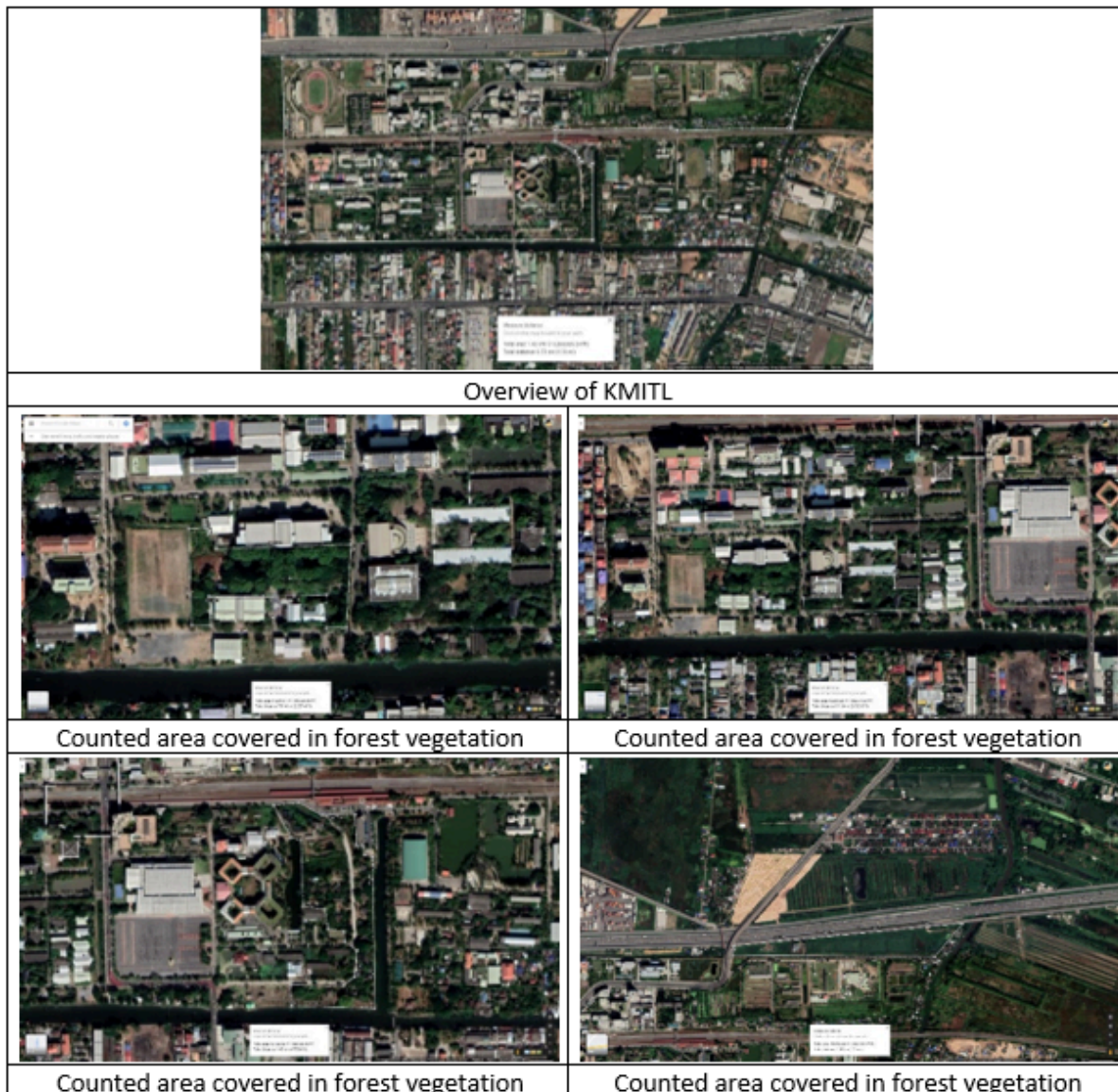
University : [King Mongkut's Institute of Technology Ladkrabang](http://www.sustainable.kmitl.ac.th/)

Country : Thailand

Web Address : <http://www.sustainable.kmitl.ac.th/>

### 1.Setting and Infrastructure (SI)

#### 1.9.Total area on campus covered in forest vegetation used for research, teaching, and/or community engagement (SI.2)





Forest vegetation area

**Description:**

KMITL has a total forest vegetation area of 1,800,472  $\text{sm}^2$ , which is distributed across various zones of Chumphon campus. These green spaces serve multiple functions beyond aesthetics. The forested areas help with natural water retention and flood control,

support the preservation of native plant species, and act as outdoor classrooms for environmental and ecological learning.

This natural landscape also contributes to improved air quality, campus cooling, and provides habitats for local biodiversity. KMITL continues to preserve and develop these forest zones as part of its sustainability strategy, aiming to integrate nature into the learning environment and promote ecological awareness among students and staff.

$$(1,800,472/6,960,344)*100=25.868 \%$$