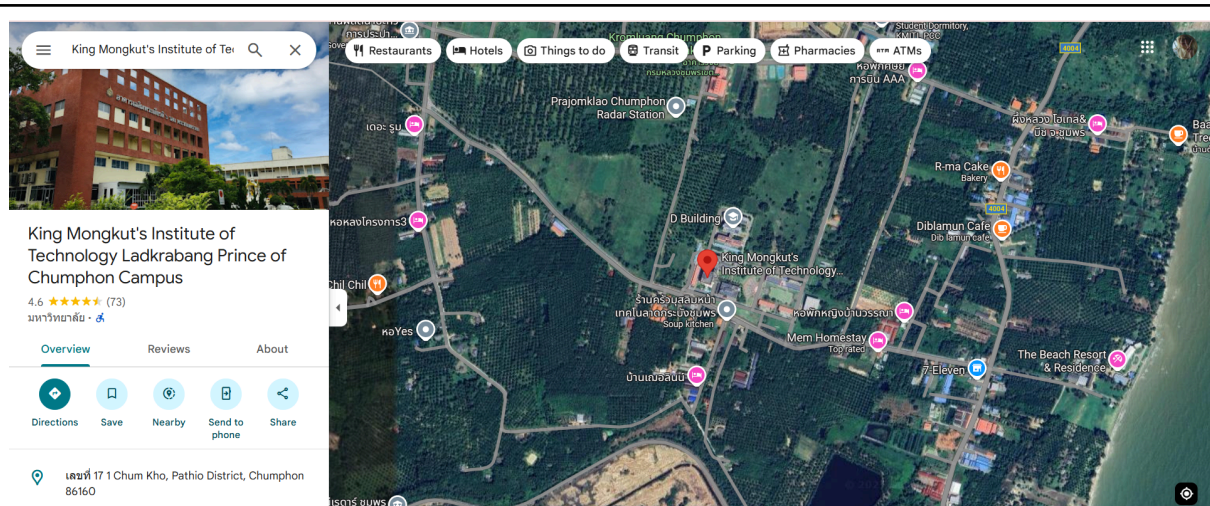


## UI GreenMetric Questionnaire

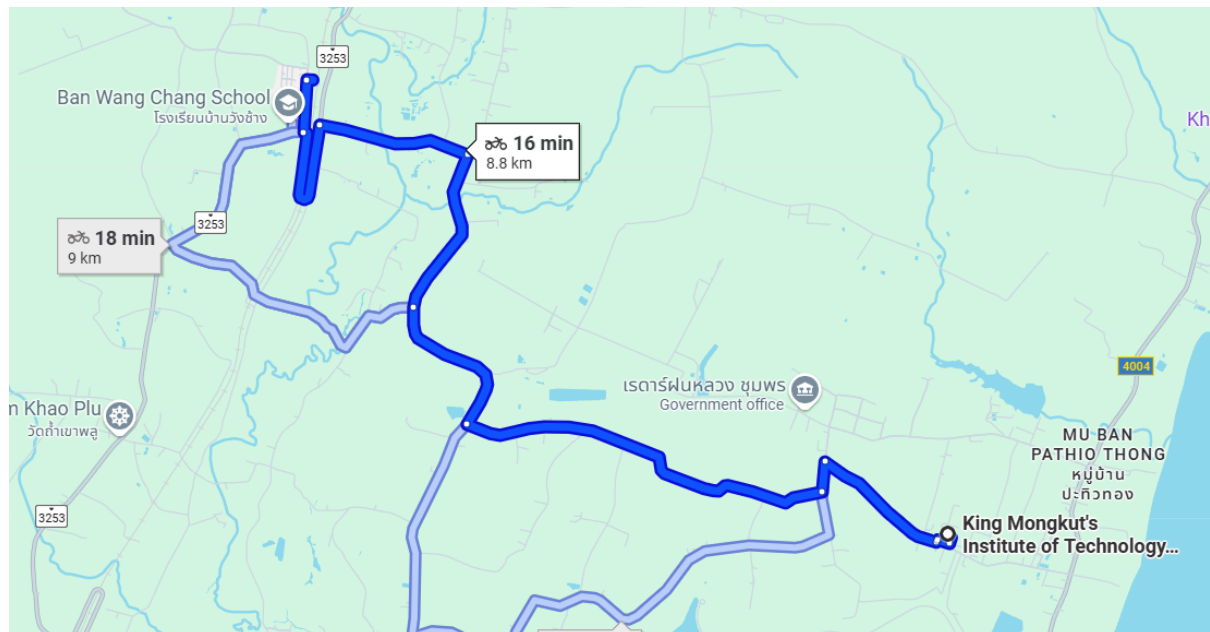
Web Address : <http://www.sustainable.kmitl.ac.th/>

### 1.4. Campus setting

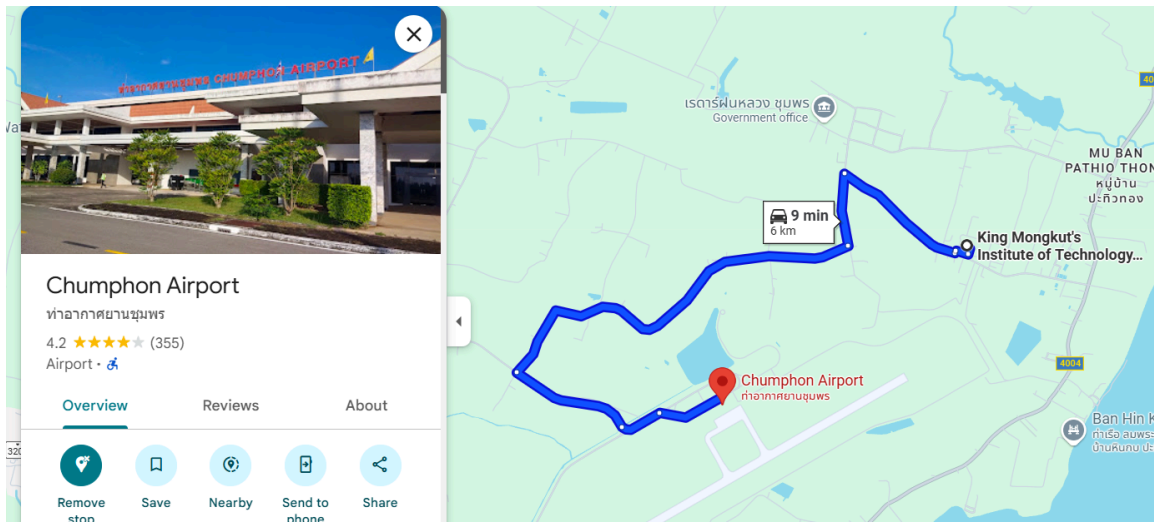




**KMITL Prince of Chumphon's campus setting**



**The nearest train station**



**Chumphon airport**

### **Description:**

King Mongkut's Institute of Technology Ladkrabang is in the urban area of Bangkok, specifically at 1 Chalon Krung 1, Ladkrabang Subdistrict, Ladkrabang District, Bangkok 10520, covering a total area of approximately 1,360,000 square meters. The campus is situated near Suvarnabhumi Airport, within the Bangkok Metropolitan Region, and is surrounded by a mix of modern and traditional architectural styles.

KMITL offers a wide range of academic programs at undergraduate, master's, and doctoral levels across various disciplines. The university comprises multiple faculties, colleges, schools, academies, and institutes, including:

- School of Engineering
- School of Architecture
- School of Industrial Education and Technology
- Faculty of Science
- Faculty of Agricultural Technology
- Faculty of Information Technology

- School of Agro-Industry
- School of Administration and Management
- School of Liberal Arts
- School of Medicine
- College of Nanotechnology
- College of Advanced Manufacturing Innovation
- College of Educational Innovation Research
- International Academy of Aviation Industry
- Institute of Music Science and Engineering
- School of Dentistry
- Faculty of Nursing
- King Mongkut's International Demonstration School
- KOSEN-KMITL

The Chumphon Campus of King Mongkut's Institute of Technology Ladkrabang is officially classified as a **rural campus**, located in Pathio District, Chumphon Province, southern Thailand. Surrounded by natural landscapes and distant from major urban centers, the campus was established with the specific mission of expanding educational access to rural communities and promoting regional development. It offers specialized programs in marine technology, fisheries, agriculture, and environmental sciences, supporting local industries and sustainable rural innovation.

As a rural campus, it is not directly connected to urban transit systems. The nearest public transportation hubs are:

- **Chumphon Airport** (6 km)



- **Klong Wang Chang train station** (8.8 km)

The rural setting provides a peaceful and focused academic environment, aligning with KMITL's vision to serve both national and community-based needs.

**Additional evidence link:**

KMITL's information: <https://kmitl.ac.th/>

KMITL Map: <https://maps.app.goo.gl/LK1EXREV2oCS92Zm7>

KMITL Chumphon's information: [https://www.itrector.kmitl.ac.th/kmitl\\_eng](https://www.itrector.kmitl.ac.th/kmitl_eng)

KMITL Chumphon's map: <https://maps.app.goo.gl/qPY3nUZpkjEf9kTt8>

Chumphon airport direction: <https://maps.app.goo.gl/zRYQPqRKebod4hebA>

Klong Wang Chang direction: <https://maps.app.goo.gl/QhGZGAFsWuAkywWh7>